

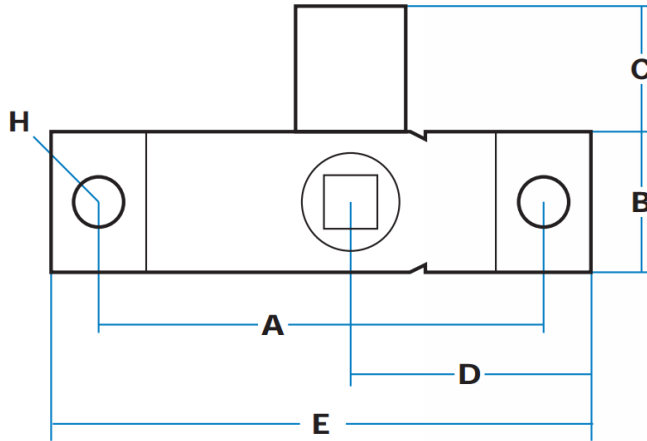
GD2 Universal Budget Latch

Features

- Simple deadbolt latch operated by 8 mm square follow-bush
- Non-handed design, with bolt able to travel 180° through case, but held positively in open and closed positions by concealed spring
- Basic model is mild steel construction, with options in stainless steel or with moulded bolt
- Two sizes of operating keys are available and die cast escutcheon covers can be fitted to conceal panel aperture

Material

- Latch available in 3 options:
 - Mild steel, zinc plated
 - Mild steel, zinc plated with moulded black nylon
 - Stainless steel
- T-keys: Malleable iron, burnished & lacquered



GD2-G09656
(Budget latch with steel bolt)



GD2-G24596
(90 mm T-key)



GD2-G24597
(125 mm T-key)

Latch

Part No.	Description	A	B	C	D	E	H	Thickness
GD2-G09656	Universal budget latch - steel	66	22	18	38	85	7	10
GD2-G09282	Universal budget latch - moulded bolt							
GD2-G09656SS	Universal budget latch - stainless steel							

Key

Part No.	Description
GD2-G24596	T-key 90 mm length
GD2-G24597	T-key 125 mm length